

DIVISION OF WILDLIFE
Ohio Department of Natural Resources

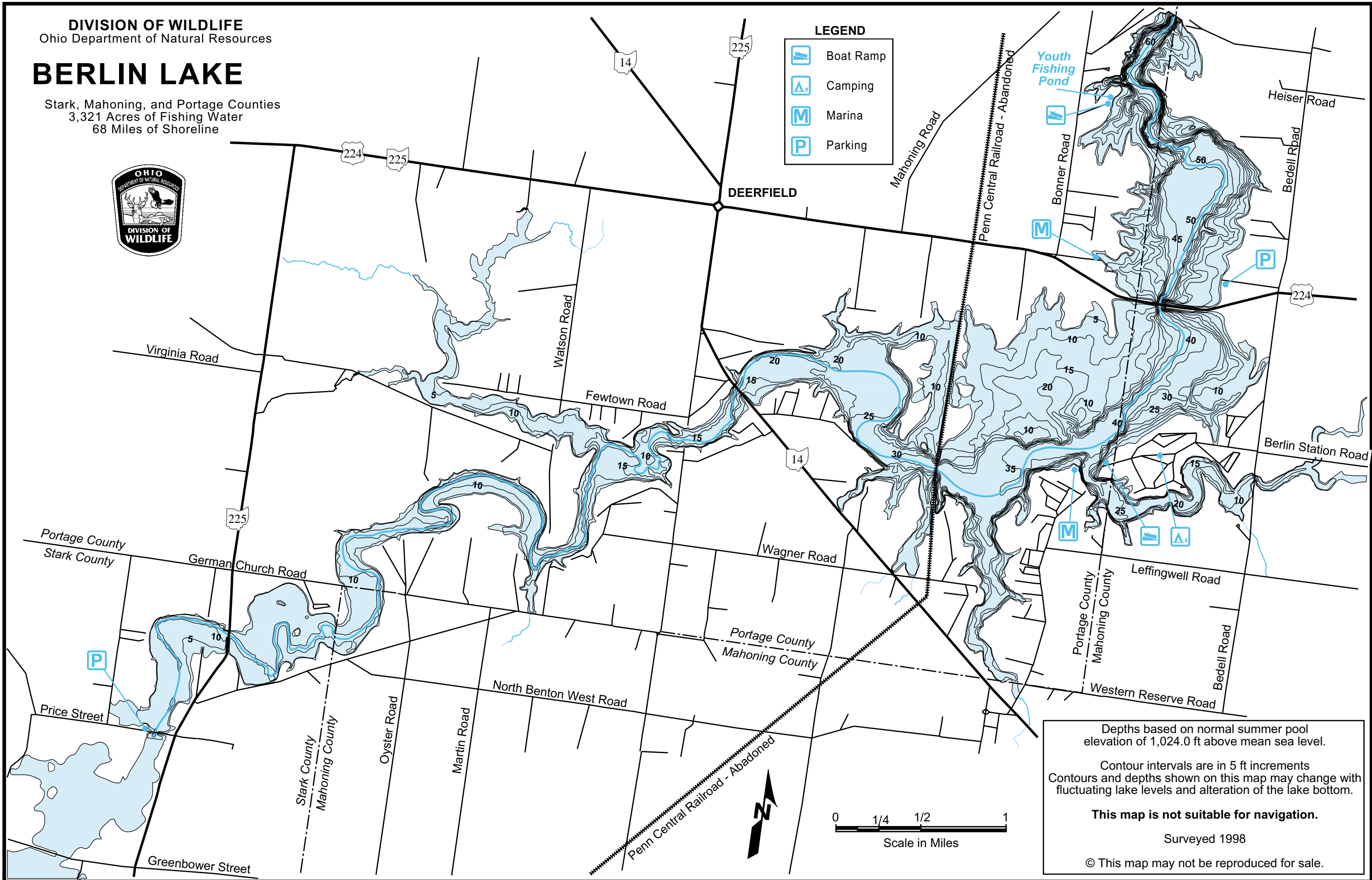
BERLIN LAKE

Stark, Mahoning, and Portage Counties
3,321 Acres of Fishing Water
68 Miles of Shoreline



LEGEND

- Boat Ramp
- Camping
- Marina
- Parking



Depths based on normal summer pool elevation of 1,024.0 ft above mean sea level.

Contour intervals are in 5 ft increments
Contours and depths shown on this map may change with fluctuating lake levels and alteration of the lake bottom.

This map is not suitable for navigation.

Surveyed 1998

© This map may not be reproduced for sale.

BERLIN LAKE

Stark, Portage, and Mahoning Counties



LOCATION

Berlin Lake lies in the northeastern part of Ohio at the junction of Stark, Portage, and Mahoning counties. The lake is located on and is accessible from U. S. Route 224 and State Routes 14 and 225.

HISTORY AND DESCRIPTION

The U.S. Army Corps of Engineers constructed Berlin Lake in 1942 on the Mahoning River. The Congressionally authorized purposes were flood control, low flow augmentation, water quality control, and water supply.

Berlin Lake has a mean depth of 23 feet with a maximum depth of 55 feet. Annual water level fluctuations can be as much as 20 feet. Mud, sand, and gravel make up most of the bottom composition. Rock ledges can be seen along the original river channel at low pool level.

FISHES OF INTEREST TO ANGLERS

Berlin Lake has populations of walleye, largemouth bass, smallmouth bass, white bass, black and white crappie, channel catfish, bullhead, bluegill, and muskellunge. With the exception of the muskellunge, these species were all stocked into Berlin Lake prior to 1975 by the ODNR Division of Wildlife. Most fish species are able to maintain their populations through natural reproduction. However, it has been necessary to supplement the walleye natural reproduction efforts through stocking to satisfy angler demand. From 1975 through 1988 periodic stockings of either walleye fry (0.25") or fingerlings (1 to 2") occurred. From 1988 through 2001 annual walleye fry stockings occurred. From 2002 forward, it is anticipated that annual walleye fingerling stockings will replace the previous fry stockings.

METHODS OF FISHING AND BEST FISHING SITES

The most sought after fish at Berlin Lake is the walleye. It is readily taken during the spring and early summer by both trolling with small diving lures and casting with jig and live bait rigs. Ice fishing with jigs and blade lures tipped with minnows is a popular method for taking walleye during the frozen winter months. Largemouth bass are caught each spring and early summer in and around the many narrow arms of this lake and in the shallow flooded willows at the upper end of the lake. Smallmouth bass are caught in good numbers each spring around the rocky areas that predominate in the middle and lower sections of the lake. Jigging is an especially effective way to catch both bass species. Each spring as the dogwood begin to bloom, some very nice crappies are caught on small jigs and live bait from the many flooded willows, fallen trees, brush piles, and stumps found in the headwaters of Berlin Lake. Beginning in June and continuing on through the summer, channel catfish can be caught after dark fishing from the shoreline.

RECREATIONAL FACILITIES AND OPPORTUNITIES

The ODNR Division of Wildlife and the U.S. Army Corps of Engineers operate and maintain a number of boat launches and parking areas around the lake. The U.S. Army Corps of Engineers also operates and maintains a campground and picnic area. There are several private marinas located around the lake with boat launch, docking, maintenance, and retail facilities.

While there are many well marked "no wake" zones, there are no horsepower restrictions for boats at Berlin Lake.

Note: Horsepower limits, "no wake" zones, and other boating regulations are subject to change. Boaters should contact the ODNR, Division of Wildlife for current information.

FISH OHIO

Anglers who catch big fish should enter their prize in the Fish Ohio angler recognition program. A fish qualifies for an award if it meets the minimum size requirements set for the Fish Ohio program. Applications are available online at FishOhio.org.

FISH MANAGEMENT ACTIVITIES

The ODNR Division of Wildlife's fish management activities include stocking, conducting periodic angler surveys, constructing fishing access facilities, improving in-lake fish habitat, monitoring fish populations with nets, seines, and electrofishing gear, and regulation enforcement. These activities are vital to providing adequate public access and determining the management practices necessary to produce quality fishing.

ADDITIONAL INFORMATION

The nearest Division of Wildlife District Office is Wildlife District Three, 912 Portage Lakes Drive, Akron, Ohio 44319 telephone (330) 644-2293. The Division of Wildlife also has a Web site for information on fishing regulations, tips, maps, and other wildlife related information (www.wildohio.com). To get other maps or publications call toll free 1-800-WILDLIFE.

To obtain information pertaining to the U.S. Army Corps of Engineer facilities write to: Lake Manager, Berlin Lake, 7400 Bedell Road, Berlin Center, Ohio 44401-9707 or phone (330) 547-3781.

TURN IN A POACHER

Ohio's TIP, "Turn In a Poacher," program is helping to control poaching throughout the state. TIP is designed to involve the public in reporting wildlife violations. Citizens who observe wildlife violations should call the TIP toll-free hotline, 1-800-POACHER.



ODNR DIVISION OF WILDLIFE DISTRICT OFFICES

WILDLIFE CENTRAL OFFICE

2045 Morse Road, Bldg. G
Columbus, Ohio 43229-6693
Phone: (614) 265-6300

WILDLIFE DISTRICT ONE

1500 Dublin Road
Columbus, Ohio 43215
Phone: (614) 644-3925

WILDLIFE DISTRICT TWO

952 Lima Avenue
Findlay, Ohio 45840
Phone: (419) 424-5000

WILDLIFE DISTRICT THREE

912 Portage Lakes Drive
Akron, Ohio 44319
Phone: (330) 644-2293

WILDLIFE DISTRICT FOUR

360 East State Street
Athens, Ohio 45701
Phone: (740) 594-2211

WILDLIFE DISTRICT FIVE

1076 Old Springfield Pike
Xenia, Ohio 45385
Phone: (937) 372-9261



ODNR Division of Wildlife internet address: wildohio.com

Toll free 1-800-WILDLIFE

An Equal Opportunity Employer M/F/H



www.ohiodnr.com